

NTR-YGQE-USA

GHOSTBUSTERS™

— THE VIDEO GAME —

NINTENDO DS™



INSTRUCTION BOOKLET

ATARI

PLEASE CAREFULLY READ THE SEPARATE HEALTH AND SAFETY PRECAUTIONS BOOKLET INCLUDED WITH THIS PRODUCT BEFORE USING YOUR NINTENDO® HARDWARE SYSTEM, GAME CARD OR ACCESSORY. THIS BOOKLET CONTAINS IMPORTANT HEALTH AND SAFETY INFORMATION.

IMPORTANT SAFETY INFORMATION: READ THE FOLLOWING WARNINGS BEFORE YOU OR YOUR CHILD PLAY VIDEO GAMES.

WARNING - Seizures

- Some people (about 1 in 4000) may have seizures or blackouts triggered by light flashes or patterns, such as while watching TV or playing video games, even if they have never had a seizure before.
- Anyone who has had a seizure, loss of awareness, or other symptom linked to an epileptic condition should consult a doctor before playing a video game.
- Parents should watch when their children play video games. Stop playing and consult a doctor if you or your child have any of the following symptoms:

Convulsions

Eye or muscle twitching

Loss of awareness

Altered vision

Involuntary movements

Disorientation

- To reduce the likelihood of a seizure when playing video games:
 1. Sit or stand as far from the screen as possible.
 2. Play video games on the smallest available television screen.
 3. Do not play if you are tired or need sleep.
 4. Play in a well-lit room.
 5. Take a 10 to 15 minute break every hour.

WARNING - Radio Frequency Interference

The Nintendo DS can emit radio waves that can affect the operation of nearby electronics, including cardiac pacemakers.

- Do not operate the Nintendo DS within 9 inches of a pacemaker while using the wireless feature.
- If you have a pacemaker or other implanted medical device, do not use the wireless feature of the Nintendo DS without first consulting your doctor or the manufacturer of your medical device.
- Observe and follow all regulations and rules regarding use of wireless devices in locations such as hospitals, airports, and on board aircraft. Operation in those locations may interfere with or cause malfunctions of equipment, with resulting injuries to persons or damage to property.

WARNING - Repetitive Motion Injuries and Eyestrain

Playing video games can make your muscles, joints, skin or eyes hurt after a few hours. Follow these instructions to avoid problems such as tendinitis, carpal tunnel syndrome, skin irritation or eyestrain:

- Avoid excessive play. It is recommended that parents monitor their children for appropriate play.
- Take a 10 to 15 minute break every hour, even if you don't think you need it.
- When using the stylus, you do not need to grip it tightly or press it hard against the screen. Doing so may cause fatigue or discomfort.
- If your hands, wrists, arms or eyes become tired or sore while playing, stop and rest them for several hours before playing again.
- If you continue to have sore hands, wrists, arms or eyes during or after play, stop playing and see a doctor.

WARNING - Battery Leakage

The Nintendo DS contains a rechargeable lithium ion battery pack. Leakage of ingredients contained within the battery pack, or the combustion products of the ingredients, can cause personal injury as well as damage to your Nintendo DS.

If battery leakage occurs, avoid contact with skin. If contact occurs, immediately wash thoroughly with soap and water. If liquid leaking from a battery pack comes into contact with your eyes, immediately flush thoroughly with water and see a doctor.

To avoid battery leakage:

- Do not expose battery to excessive physical shock, vibration, or liquids.
- Do not disassemble, attempt to repair or deform the battery.
- Do not dispose of battery pack in a fire.
- Do not touch the terminals of the battery, or cause a short between the terminals with a metal object.
- Do not peel or damage the battery label.

Important Legal Information

REV-E

This Nintendo game is not designed for use with any unauthorized device. Use of any such device will invalidate your Nintendo product warranty. Copying of any Nintendo game is illegal and is strictly prohibited by domestic and international intellectual property laws. "Back-up" or "archival" copies are not authorized and are not necessary to protect your software. Violators will be prosecuted.

The official seal is your assurance that this product is licensed or manufactured by Nintendo. Always look for this seal when buying video game systems, accessories, games and related products.

Nintendo does not license the sale or use of products without the Official Nintendo Seal.



THIS GAME CARD WILL WORK
ONLY WITH THE NINTENDO DS™
VIDEO GAME SYSTEM.

CAUTION - Stylus Use

To avoid fatigue and discomfort when using the stylus, do not grip it tightly or press it hard against the screen. Keep your fingers, hand, wrist and arm relaxed. Long, steady, gentle strokes work just as well as many short, hard strokes.



Licensed by



NINTENDO, NINTENDO DS AND THE OFFICIAL SEAL ARE TRADEMARKS OF NINTENDO.

© 2006 NINTENDO.

TABLE OF CONTENTS

GETTING STARTED	2
INTRODUCTION	2
CONTROLS	3
On Foot Controls	4
Driving Controls	4
STARTING A MISSION	5
THE MISSION AREA	6
Interactions	6
Controlling the Team	6
Wrangling and Capturing Ghosts	7
Health and Courage	7
GHOSTBUSTERS HQ	8
Janine's Desk	9
Office	9
Ecto-1	10
Stairs/Pole	10
Egon's Lab	11
Ray's Workshop	12
Couch	12
ATARI WEB SITES	13
TECHNICAL SUPPORT (U.S.A. & CANADA)	14
END-USER LICENSE AGREEMENT	15

GETTING STARTED

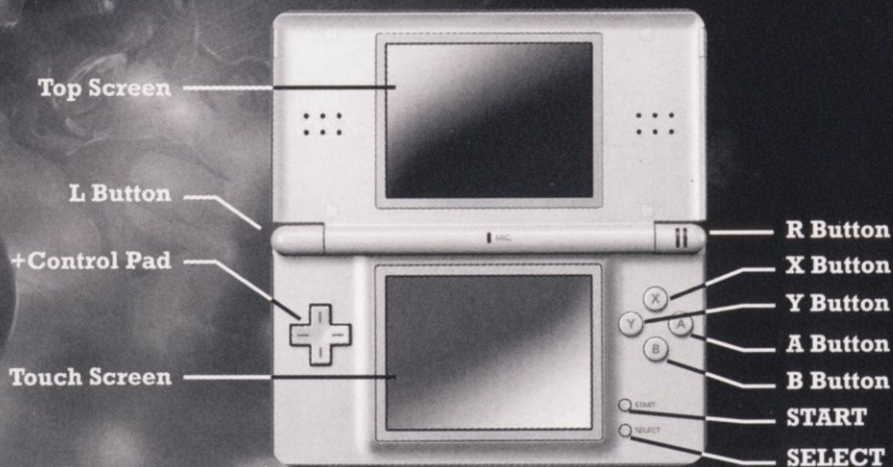
1. Turn the Nintendo DS power off. Never insert a Game Card when the console is turned on.
2. Insert the Ghostbusters™: The Video Game Game Card in the Game Card slot.
3. When the power is turned on, the Health and Safety Screen is displayed. Touch the GHOSTBUSTERS™ panel on the DS Menu Screen to start the game. If the Nintendo DS system is set to Auto Mode, the game will automatically start after the Health and Safety Screen is displayed.
4. At the title screen, touch the Touch Screen with the Nintendo DS stylus to start the game.

INTRODUCTION

It's 1991, and business has been slow for the Ghostbusters for the past two years. However, after a pulse of paranormal energy rips through the city, it is once again up to Peter, Ray, Egon and Winston to clean up the ghosts that have infested it. Along the way, you'll be able to upgrade each of the Ghostbuster's skills and research new, more powerful Ghostbusting equipment. Time to save the world, again!



CONTROLS

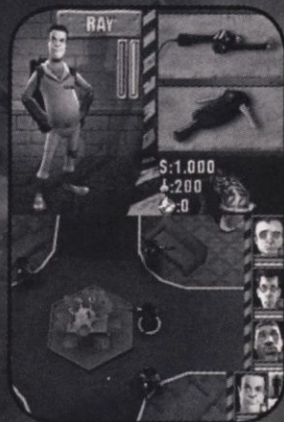


NINTENDO DS™ LITE

Tip: Southpaws can select the Left Handed control option from the Main Menu. This option swaps the **L Button** and **R Button** functions and swaps the **+Control Pad** directions with the **A Button**, **B Button**, **X Button**, and **Y Button**, freeing your left hand to use the Nintendo DS stylus.

On Foot Controls

+Control Pad	Move
Touch Screen	Proton Beam / Slime Gun
A Button / Touch Screen	Interact With Person or Item
L Button + Touch Screen	Throw Ghost Trap
R Button	PKE Meter / Equipment
X Button	Toggle Proton / Slime
Y Button	Toggle Overhead Map
B Button	Activate Special Ability
SELECT	View Objectives
START	Pause Menu



Driving Controls

+Control Pad Up	Gas
+Control Pad Down	Reverse/Brake
+Control Pad Left	Steer Left
+Control Pad Right	Steer Right
Touch Screen	Fire Proton Turret
R Button or L Button	Handbrake
A Button	Enter Building (at mission buildings and HQ)
X Button	Siren On/Off
SELECT	Music On/Off
START	Pause Menu



While driving through the city, you may encounter ghosts flying around. Egon has retrofitted a large Proton Turret and Muon Containment Trap on the roof of the Ecto-1 to allow you to wrangle and capture ghosts while on the road.



STARTING A MISSION

You can take customer calls to earn cash and resources necessary to finance the Ghostbusters business (equipment, research, upgrades, and payroll). You'll also need to investigate the major paranormal happenings around the city.

Janine keeps track of both mission types, Story and Side, on the bulletin board behind her desk. Activate it to view a list of available missions. Touch a mission to display mission information and hints. Once you have decided on a mission, touch the green check mark on the bottom-right of the Touch Screen.

Missions occur throughout the city, so the best and only method of travel is the Ecto-1. Capture rogue ghosts for additional income, and avoid obstacles that can damage the Ecto-1. Reach the mission area before the mission timer expires. Once you arrive at your destination, drive over the Mission Marker and press the **A Button** to activate the mission.

THE MISSION AREA

Interactions

To speak with a character, or to use or pick up an object, simply touch the person or object, or get close and press the A Button.

Controlling the Team

Normally, all other Ghostbusters will follow the character you control and attack your target. However, in some situations you may want them to stay put. Touch the red icon to the right of your character's portrait to order all other Ghostbusters to stop. Touch the green icon to order all other Ghostbusters to follow you again. You can give the same orders given to individual Ghostbusters by touching the red/green dot on their portrait. When a Ghostbuster is stopped, he will attack any enemies that come close, rather than wait for you to choose a target.



Wrangling and Capturing Ghosts



Although you can completely destroy some supernatural entities with a proton stream, most of the ghosts you face must be contained within a ghost trap.

To capture a ghost in a ghost trap, you must first weaken it with a proton stream or positively charged slime. Touch the ghost to fire at it, and touch the Touch Screen while holding the **L Button** to throw a ghost trap. Once the ghost is sufficiently weakened, you can drag it over a trap and capture it.

Some ghosts have special abilities that require more complex techniques. For example, if a ghost possesses one of the Ghostbusters, you need to evict it by dousing him with positively charged slime. Once it has left, you can capture it by normal means.

Health and Courage

Ghostbusters' health, represented by a red bar below their character portraits, can be damaged by ghosts' physical attacks. Their courage, represented by a blue bar, can also be reduced by ghosts' scare attacks. If a Ghostbuster loses all health, he is knocked out, and if he loses all courage, he panics. In either case, the Ghostbuster is completely incapacitated for a period of time. If four Ghostbusters become incapacitated at the same time, you fail the mission.

To restore a Ghostbuster's health with a Recovery Coax Catalyst, drag and drop the health icon to the desired character's portrait. You can also double touch the icon to use a Recovery Coax Catalyst on all four Ghostbusters at once. Be thrifty, though, because you can only carry a limited amount of these items into a mission.



GHOSTBUSTERS HQ



The old firehouse is still home to the Ghostbusters business. Within the firehouse, you can perform management tasks that keep that business running smoothly and allow you to get the most out of the team.

Janine's Desk

At the desk of your faithful receptionist, you can receive new missions, view a summary of completed Story missions, and use the Game Menu to save or quit the game.

The mission list posted on the bulletin board behind the desk shows a list of customer calls in blue and Story missions in red. It also shows the number of days until the mission expires and the cash reward for completing the mission.

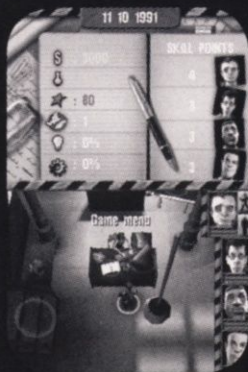
Office

In the back office on the first floor, databases stored on the computer keep track of skill training, equipment, reputation, and budget.

Use the Skill Advancement screen to purchase new skills for each Ghostbuster using skill points earned from successful missions.

The Equip GBs screen allows you to equip the Ghostbusters with the latest and greatest equipment you've researched and produced.

The Reputation stats screen shows you what the city of New York thinks of you. Higher reputation comes from completing missions, while lower reputation comes from failing and ignoring missions. The higher



your reputation, the bigger the daily stipend you get from the city. Be careful to keep your reputation above zero — if you don't, you will lose the game!

The Financial information screen shows a summary of your income and expenses.

Ecto-1

Want to drive around the city chasing ghosts or just explore without the pressure of an urgent mission? Hop in the driver's side door and cruise to your heart's content.

You can also load spare equipment into the Ecto-1 trunk, which you can access during missions.

If the Ecto-1's gotten a little banged-up, you can repair it for a fee by using the workbench in the firehouse.

Note: There are also Car Mechanic shops located in the city (look for a wrench icon on the mini map) that allow you to fix up the Ecto-1 as well.

Stairs/Pole

Use the stairs and the fire pole to move between floors.



Egon's Lab



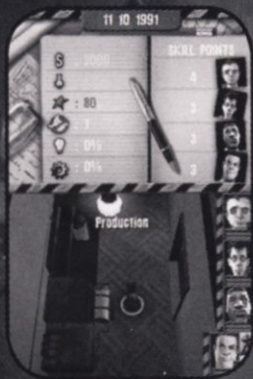
Just upstairs is the lab where Egon researches exotic new technology. Select a technology from the list and Egon will start researching it, if you can afford it. If you don't have enough money or ectoplasm to start research, complete a few missions first!

Once per day, you can spend extra resources to speed up the research.

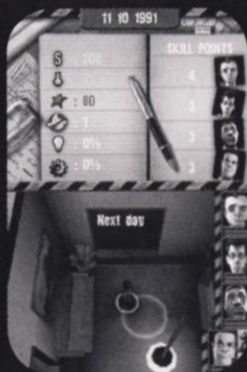


Ray's Workshop

Here, you can manufacture items based on Egon's research. Drag and drop the blueprint of the item you want to make onto an available slot, and manufacturing will begin (as long as you can afford the necessary materials). As in Egon's lab, you can pay extra once per day to speed up the process.



Couch



Had a hard day of busting ghosts? Crash on the couch located next to Ray's Workshop to advance to the next day. Side missions you haven't completed at this point may expire, reducing your reputation, so don't get lazy!

ATARI WEB SITES

To get the most out of your new game, visit us at:

www.ghostbustersgame.com

If you would like to chat with other gamers, as well as developers, visit our Community Forum area at:

ataricommunity.com

Kids, check with your parent or guardian before visiting any web site.

Chat Messages: Atari does not monitor, control, endorse, or accept responsibility for the content of chat messages. You are strongly encouraged not to give out identity or other personal information through chat message transmissions. Kids, check with your parent or guardian if you are concerned about any chat you receive.

Use of Atari web sites is subject to terms and conditions, which you can access at:

atari.com/us/tos

TECHNICAL SUPPORT (U.S.A. & CANADA)

HELP VIA THE INTERNET

Up-to-the-minute technical information about Atari products is generally available 24 hours a day, 7 days a week via the Internet at:

atarisupport.com

Through this site you'll have access to our FAQ (Frequently Asked Questions) documents, our FTP (File Transfer Protocol) area where you can download patches if needed, our Hints/Cheat Codes if they're available, and an Email area where you can get help and ask questions if you do not find your answers within the FAQ.

You can also contact technical support Monday through Friday, 9am to 5pm EST, by calling 866-721-4977, or write to: Atari, Inc., Attn: Customer Support, 417 5th Avenue, New York, NY 10016.

Note: In the event we must send you an FAQ document, patch or update via Email, we may require verifiable consent from a parent or guardian in order to protect children's privacy and safety online. Consent forms are available at the web site listed above.

PRODUCT RETURN PROCEDURES IN THE UNITED STATES & CANADA

Please first contact Atari Customer Support at atarisupport.com to determine the nature of your problem. Some issues that appear to be product defects are actually configuration-related and are easily fixed.

In the event our support team has determined that you need to return your game, it is recommended that you first try your retailer. Return the game to your retailer along with the original sales receipt and an explanation of the difficulty you are experiencing with the game. At its option, the retailer may replace the game.

Alternatively, our support representatives will provide you with a Return Merchandise Authorization number (RMA#) and instructions for returning your product to Atari for replacement.

WARRANTY POLICY IN THE UNITED STATES & CANADA

If our technicians determine that the product storage medium is found to be defective within ninety (90) days of original purchase, (unless otherwise provided by applicable law), Atari will replace the item free of charge, to the original purchaser, if the item is accompanied by the original dated receipt and packaging.

END-USER LICENSE AGREEMENT

IMPORTANT — READ CAREFULLY: Please be sure to carefully read and understand all of the rights and restrictions described in this End-User License Agreement (“EULA”).

AGREEMENT

This document is an agreement between you and Atari, Inc. and its affiliated companies (“Company”). The enclosed software game disc(s), cartridge or Game Pak (“Software”) and any accompanying printed materials are licensed to you only on the condition that you accept all of the terms contained in this EULA. By opening this package and installing or otherwise using the Software you agree to be bound by the terms of this EULA. If you do not agree to the terms of this EULA you may not install or use the Software and within 15 days of purchase you must contact Customer Support at atarisupport.com.

You will be given a Return Merchandise Authorization number (RMA #). You then have 15 days from the date of this contact to return the Software in its protective covering, the Manual and the original sales invoice to the address supplied to you. If this is a PC product, when you install the Software you will be asked to review and either accept or not accept the terms of the EULA by clicking the “I Accept” button. By clicking the “I Accept” button you acknowledge that you have read the EULA, understand it and agree to be bound by its terms and conditions.

COPYRIGHT

The Software is protected by copyright laws and international copyright treaties, as well as other intellectual property laws and treaties. All title and copyrights in and to the Software (including but

not limited to any images, photographs, animations, video, music, text and “applets” incorporated into the Software and any results or proceeds created by you using the Software) and any printed materials accompanying the Software are owned by the Company or its Licensors.

GRANT OF LICENSE

The Software is licensed and not sold to you and its use is subject to this EULA. The Company grants you a limited, personal, non-exclusive license to use the Software in the manner described in the user documentation. The Company reserves all rights not expressly granted to you in this EULA.

PERMITTED USES

If the Software is configured for loading on a hard drive, you may install and use the Software on a single computer. You may make and maintain one copy of the Software for backup and archival purposes, provided that the original and copy of the Software are kept in your possession. You may permanently transfer all your rights under this EULA, provided you retain no copies, you transfer all of the Software (including all component parts, the media and printed materials and any upgrades) and the recipient reads and accepts this EULA.

RESTRICTIONS

1. You may not delete or obscure any copyright, trademark or other proprietary notice on the Software or accompanying printed materials.
2. You may not decompile, modify, reverse engineer, disassemble or otherwise reproduce the Software.
3. You may not copy, rent, lease, sublicense, distribute, publicly display the Software, create derivative works based on the Software (except to the extent expressly permitted in the Editor and End-User Variation section of this Agreement or other documentation accompanying the Software) or otherwise commercially exploit the Software.
4. You may not electronically transmit the Software from one computer, console or other platform to another or over a network.
5. You may not use any backup or archival copy of the Software for any purpose other than to replace the original copy in the event it's destroyed or becomes defective.

EDITOR AND END-USER VARIATIONS

If the Software includes a feature that allows you to modify the Software or to construct new variations (an "Editor"), you may use such Editor to create modifications or enhancements to the Software, including the construction of new levels (collectively the "Variations"), subject to the following restrictions. Your Variations: (i) must only work with the full, registered copy of the Software; (ii) must not contain modifications to any executable file; (iii) must not contain any libelous, defamatory or other illegal material, material that is scandalous or invades the rights of privacy or publicity of any third party; (iv) must not contain any trademarks, copyright-protected work or other property of third parties; and (v) may not be commercially exploited by you, including but not limited to making such Variations available for sale or as part of a pay-per-play or timesharing service.

TERMINATION

This EULA is effective until terminated. You may terminate this EULA at any time by destroying the Software. This EULA will terminate automatically without notice from the Company if you fail to comply with any provisions of this EULA. All provisions of this EULA as to warranties, limitation of liability, remedies and damages will survive termination.

LIMITED WARRANTY AND DISCLAIMER OF WARRANTIES

You are aware and agree that use of the Software and the media on which it is recorded is at your sole risk. The Software and media are supplied "AS IS." Unless otherwise provided by applicable law, the Company warrants to the original purchaser of this product that the Software storage medium will be free from defects in materials and workmanship under normal use for ninety (90) days from the date of purchase. The warranty is void if the defect has arisen through accident, abuse, neglect or misapplication. If the Software fails to conform to this warranty, you may at your sole and exclusive remedy, obtain a replacement free of charge if you return the defective Software. Follow the Product Return Procedures described in the Manual. The Company does not warrant that the Software or its operations or functions will meet your requirements, or that the use of the Software will be without interruption or error.

TO THE FULLEST EXTENT PERMISSIBLE UNDER APPLICABLE LAW, EXCEPT FOR THE EXPRESS WARRANTY SET FORTH ABOVE, THE COMPANY DISCLAIMS ALL WARRANTIES, EXPRESS OR IMPLIED, INCLUDING AND WITHOUT LIMITATION, THE IMPLIED WARRANTIES OF MERCHANTABILITY AND FITNESS FOR A PARTICULAR PURPOSE AND NON-INFRINGEMENT. EXCEPT FOR THE EXPRESS WARRANTY SET FORTH ABOVE, THE COMPANY DOES NOT WARRANT, GUARANTEE OR MAKE ANY REPRESENTATION REGARDING THE USE OR THE RESULTS OF THE USE OF THE SOFTWARE IN TERMS OF ITS CORRECTNESS, ACCURACY, RELIABILITY, CURRENTNESS OR OTHERWISE. SOME JURISDICTIONS DO NOT ALLOW THE EXCLUSION OF OR LIMITATIONS ON IMPLIED WARRANTIES, SO THE ABOVE EXCLUSIONS AND LIMITATIONS MAY NOT APPLY TO YOU.

LIMITATION OF LIABILITY

IN NO EVENT WILL THE COMPANY OR ITS EMPLOYEES OR LICENSORS BE LIABLE FOR ANY INCIDENTAL, INDIRECT, SPECIAL, CONSEQUENTIAL OR PUNITIVE DAMAGES, OR ANY DAMAGES WHATSOEVER (INCLUDING, WITHOUT LIMITATION, DAMAGES FOR INJURY TO PERSON OR PROPERTY, FOR LOSS OF PROFITS, BUSINESS INTERRUPTION, LOSS OF BUSINESS INFORMATION, LOSS OF PRIVACY, FAILURE TO MEET ANY DUTY AND NEGLIGENCE) ARISING OUT OF OR IN ANY WAY RELATED TO THE USE OR INABILITY TO USE THE SOFTWARE, EVEN IF THE COMPANY OR AN AUTHORIZED REPRESENTATIVE OF THE COMPANY HAS BEEN ADVISED OF THE POSSIBILITY OF SUCH DAMAGES. SOME JURISDICTIONS DO NOT ALLOW THE EXCLUSION OF LIABILITY FOR INCIDENTAL OR CONSEQUENTIAL DAMAGES, SO THE ABOVE EXCLUSION MAY NOT APPLY TO YOU.

IN NO EVENT WILL THE LIABILITY OF THE COMPANY FOR DAMAGES WITH RESPECT TO THE SOFTWARE EXCEED THE AMOUNTS ACTUALLY PAID BY YOU FOR THE SOFTWARE.

THIRD-PARTY LICENSORS

You acknowledge that the Software contains software and/ or materials of third party licensors. You will comply with all requirements imposed upon the Company by third party licensors. You acknowledge and agree that you are not a third party beneficiary of any agreements between the Company and its third

party licensors. You acknowledge and agree that the Company's third party licensors are and shall be a third party beneficiary of this EULA.

CHOICE OF LAW AND VENUE

This EULA is governed by the laws of the United States of America and the State of New York, exclusive of its conflicts of law provisions. The exclusive venue for litigation regarding or arising from this EULA is New York County, New York and you agree to submit to the Jurisdiction of the courts of New York County, New York for any such litigation.

MISCELLANEOUS

If any provision or portion of this EULA is found to be unlawful, void, or for any reason unenforceable, it will be severed from and in no way affect the validity or enforceability of the remaining provisions of the EULA. You agree to adhere to all applicable laws, regulations and rules relating to the export of technical data and shall not export or re-export any technical data, the Software, or the direct product of such technical data to any proscribed country listed in such applicable laws, regulations and rules unless properly authorized.

This EULA constitutes the entire agreement between you and the Company regarding the Software and its use.

"GHOSTBUSTERS" The Video Game: TM & © 2009 Columbia Pictures Industries, Inc. "GHOSTBUSTERS" with the "GHOST DESIGN" is a registered trademark of Columbia Pictures Industries, Inc. "GHOSTBUSTERS" and "GHOSTBUSTERS 2" movies: © 1984, © 1989 Columbia Pictures Industries, Inc. All rights reserved. Game Software excluding Columbia Pictures Elements: © 2009 Atari Interactive, Inc. All rights reserved. Developed by Zen Studios, Inc. Marketed and distributed by Atari, Inc. New York, NY. Atari and the Atari logo are trademarks owned by Atari Interactive, Inc. PX Engine © 2005-2009 ZEN Studios Ltd. All rights reserved. All other trademarks are the property of their respective owners. The ESRB ratings icon is a registered trademark of the Entertainment Software Association.

043009



GET MORE NOW!

Register online today at
<http://www.gameregister.com>
to receive special offers and the inside scoop
about Atari products!

Your privacy is assured. For more information about our
privacy policy, visit **<http://www.atari.com/us/privacy>**.

www.ghostbustersgame.com

"GHOSTBUSTERS" The Video Game: TM & © 2009 Columbia Pictures Industries, Inc. "GHOSTBUSTERS" with the "GHOST DESIGN" is a registered trademark of Columbia Pictures Industries, Inc. "GHOSTBUSTERS" and "GHOSTBUSTERS 2" movies: © 1984, © 1989 Columbia Pictures Industries, Inc. All rights reserved. Game Software excluding Columbia Pictures Elements: © 2009 Atari Interactive, Inc. All rights reserved. Developed by Zen Studios, Inc. Marketed and distributed by Atari, Inc. New York, NY. Atari and the Atari logo are trademarks owned by Atari Interactive, Inc. PX Engine © 2005-2009 ZEN Studios Ltd. All rights reserved. All other trademarks are the property of their respective owners. The ESRB ratings icon is a registered trademark of the Entertainment Software Association.

Atari, Inc.
417 Fifth Avenue
New York, NY 10016 USA

PRINTED IN USA.

ATARI

Part # 27764M

THIS FILE WAS PROVIDED BY



SPOOKCENTRAL.TK